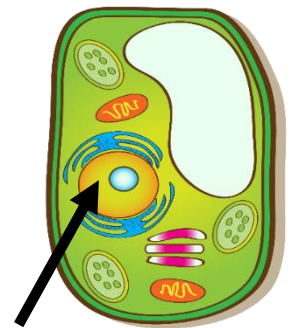
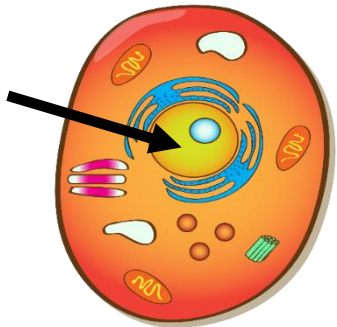


Multicellular

Identify the organelle that controls the activities of a cell.

The “brain” of the cell.

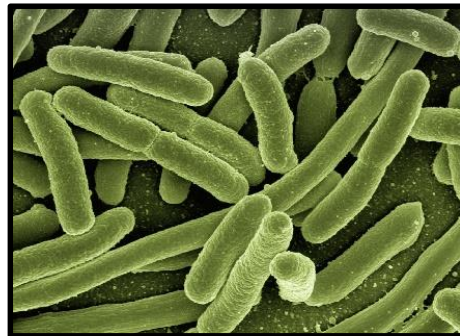


K

Nucleus

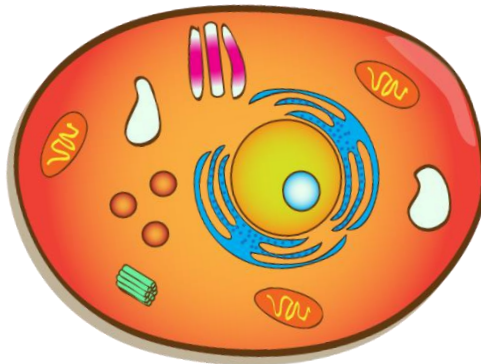
Identify the type of cell that
does not contain a nucleus.

20



Prokaryotic

Does the cells pictured below belong to a plant or an animal?

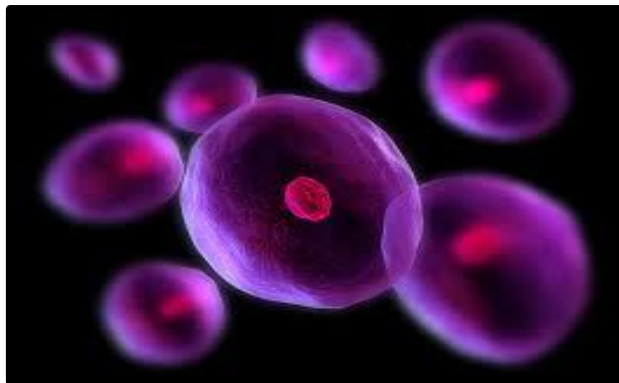


R

Animal

What structure is considered
the basic unit of life?

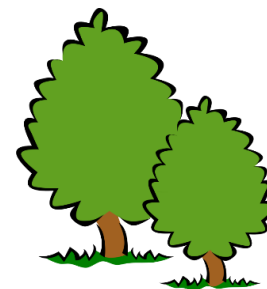
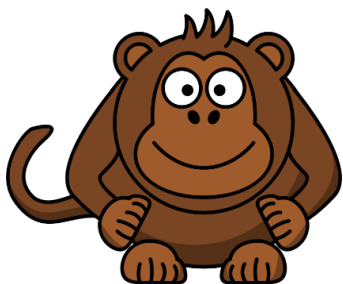
II



Cell

True or False?

All living things are made up of
one or more cells.

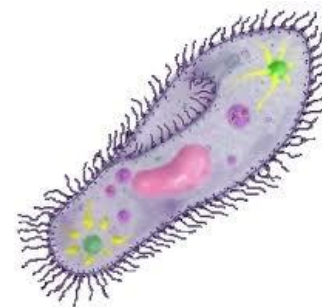
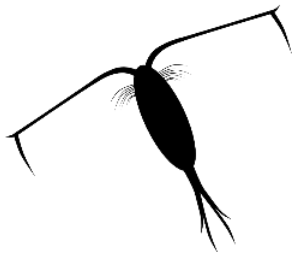


T

True

14

What term is used to describe
an organism that is made up
of only 1 cell?

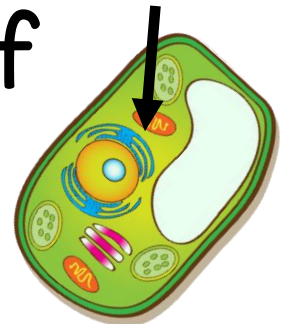
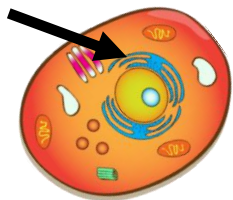


Y

Unicellular

What term describes the
“passageways” in a cell that
carry materials from one part of
a cell to another?

q

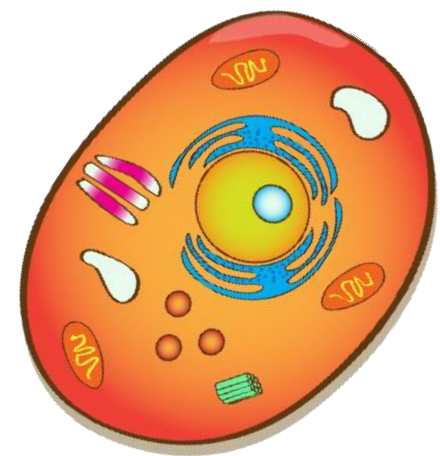


Endoplasmic Reticulum

I

Identify the type of cell that contains membrane enclosed organelles, such as a nucleus.

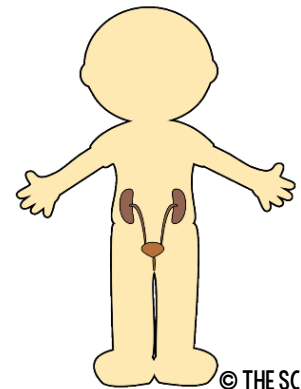
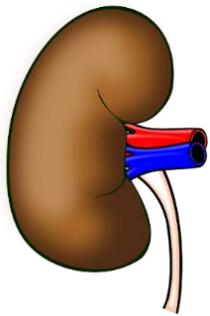
23



Eukaryotic

Complete the analogy below.

Tissues are to organs as organs are
to _____ .

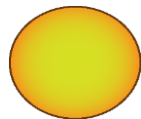
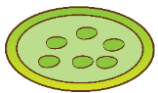
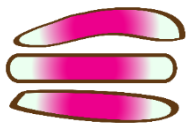


Organ Systems

A

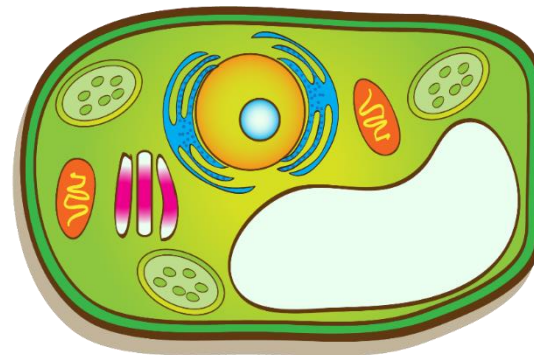
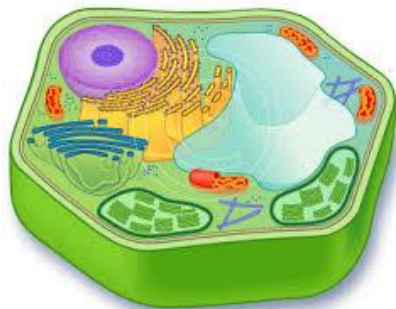
What term describes the tiny cell parts that carry out specific functions within the cell?

25



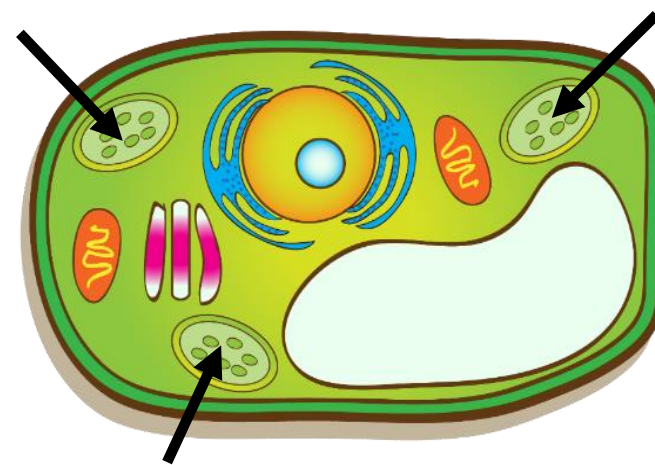
Organelles

Do the cells pictured below belong to a plant or an animal?



Plant

What organelle in plant cells contains chlorophyll and makes food from sunlight?

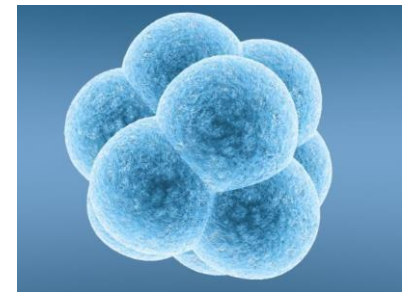
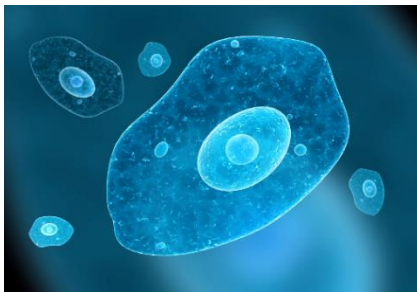


Chloroplast

True or False?

2

All cells (living or dead) can produce
new living cells.

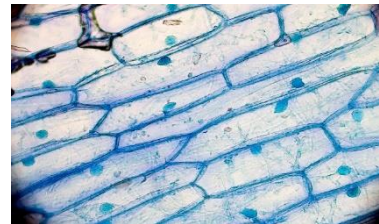
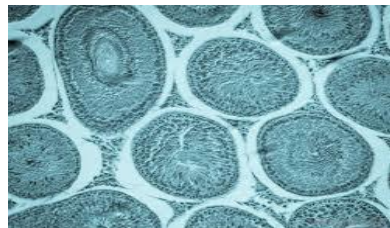


D

False

Identify the term that describes groups of similar cells that do the same sort of work.

I



Tissue

What are the statements below describing?

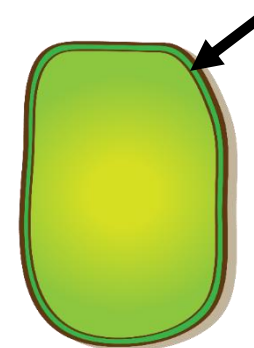
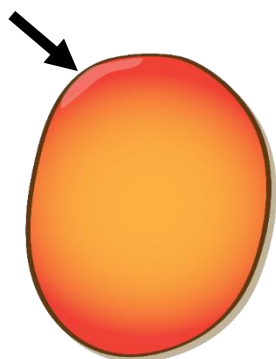
18

1. Cells are the basic unit of life.
2. Cells come from other living cells.
3. All living things are made up of one or more cells.

Cell Theory

Identify the part of a cell that controls what comes in and out of the cell.

22

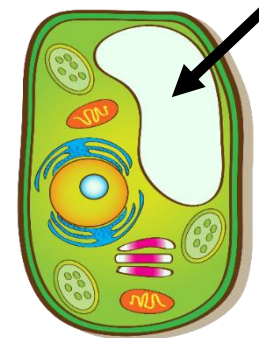
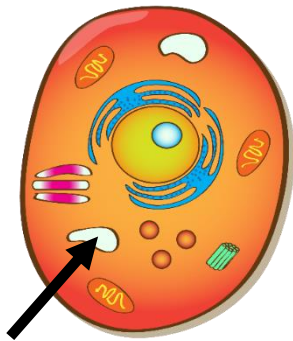


Cell Membrane

B

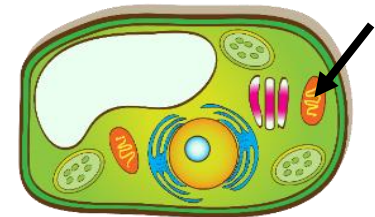
Identify the part of a cell that
serves as the storage area of
the cell.

4

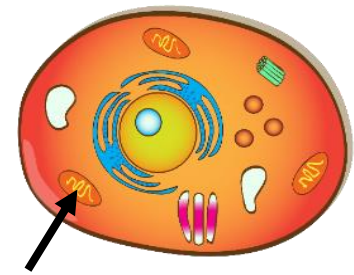


Vacuole

What term describes the “power house” of a cell that produces energy needed for a cell to carry out its functions?

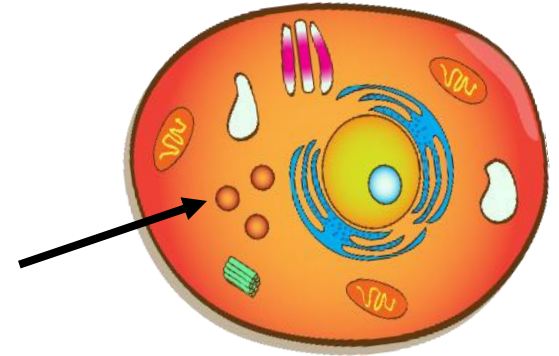


12



Mitochondria

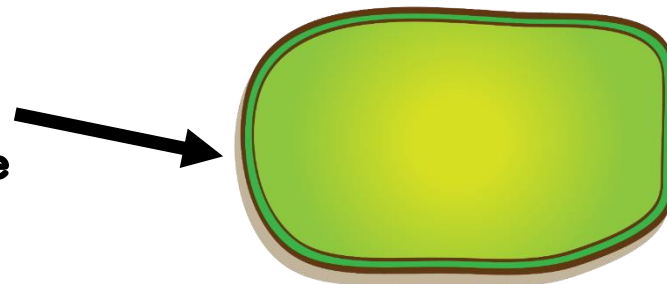
Identify the “stomach” of the cell that breaks down waste and digests organelles that are not needed.



Lysosome

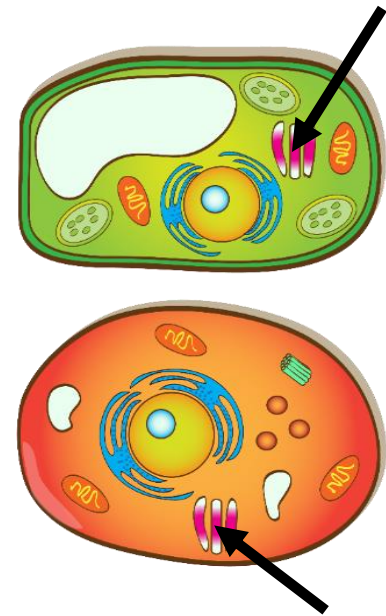
What term describes the rigid layer surrounding a plant cell.

Provides support,
strength, and shape



Cell Wall

Identify the “mailroom” of the cell that packages and distributes materials to other parts of the cell.

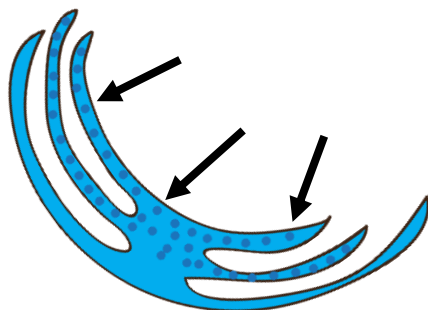


X

Golgi Bodies

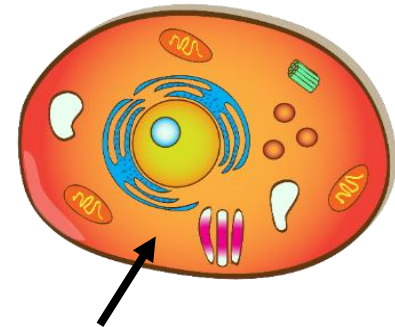
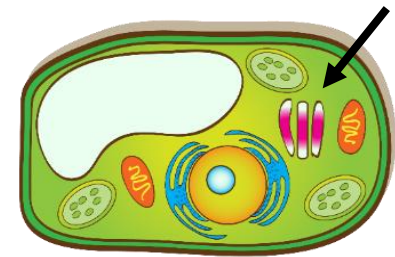
What organelle makes proteins to help repair damage to the cell?

16



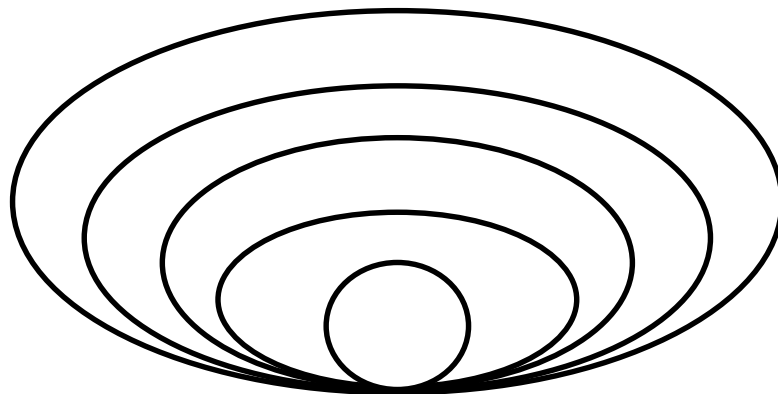
Ribosomes

What term describes the thick, gel-like fluid inside the cell between the nucleus and cell membrane?



Cytoplasm

Identify the Levels of Organization in
living organisms from smallest to largest.



Cell, Tissue, Organ, Organ System, Organism

P

What term is used to describe
an organism that is made up of
more than 1 cell?

24

